

Percolation Test And Geological Report
For Septic Tank Installation
(for Subdivision Approval)

Project

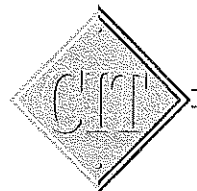
Circle G Pegasus Airpark, Unit 2
Empire Boulevard and Ellsworth Road
Queen Creek, Arizona

Prepared For

Circle G Pegasus
2220 S. Country Club, Suite 107
Mesa, Arizona 85210

CONSTRUCTION INSPECTION & TESTING CO.

2137 WEST 7TH STREET
TEMPE, ARIZONA 85281-7227
(480) 446-9876 FAX (480) 446-7580



CONSTRUCTION INSPECTION & TESTING Co.



2137 WEST 7TH STREET
TEMPE, ARIZONA 85281-7227
(480) 446-9876 FAX (480) 446-7580

May 2, 2002

Circle G Pegasus
2220 S. Country Club, Suite 107
Mesa, Arizona 85210

Re: **Percolation Test Report
For Septic Systems (Subdivision Approval)**

Project: Circle G Pegasus Airpark, Unit 2
Empire Boulevard and Ellsworth Road
Queen Creek, Arizona

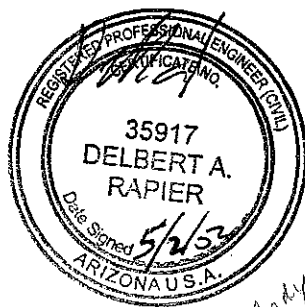
CIT Project No. 02-20777-1

Attention: Wendy Lillycrop

In accordance with your request, we have completed the percolation tests for the subject project in accordance with the requirements for the Maricopa County Environmental Services Department for subdivision approval.

The accompanying report presents the results of this investigation.

Respectfully Submitted,
Construction Inspection & Testing Co.



Delbert A. Rapier, M.S.E., P.E.

Copies to: Addressee (3)

CONSTRUCTION INSPECTION & TESTING CO.

Circle G Pegasus Airpark, Unit 2
Empire Boulevard and Ellsworth Road
Queen Creek, Arizona
Project No. 02-20777-1

Percolation Test Report For Septic System

Percolation testing for septic systems was performed at the subject site at the locations indicated on the attached site plan. The procedures used at the test locations are in accordance to regulations. With testing performed at the primary and reserve leachfield locations meet the requirements of the Arizona Department of Environmental Quality (ADEQ) (Title 18. Environmental Quality, Chapter 9. Department of Environmental Quality Water Pollution Control). The following items are submitted subsequent to percolation testing for subdivision approval:

1. General Description of Area:
The site consists of former irrigated crop land with a slight downward slope to the north.
2. Method of Making Soil Profile & Percolation Tests:
Exploratory test holes (at the locations indicated on the attached site plan) were advanced to a depth of 50.0 feet below existing surface. The soils encountered were visually classified and logged using the unified soils classification system
3. Map Showing Location of Test Pits:
Refer to attached site plan (Plate A)
4. Boring Logs:
Attached (Plate B)
5. Percolation Test Results:
Subsequent to the exploratory test hole, percolation test holes were excavated to a depth of 50 feet. The test holes were then pre-soaked for a significant period of time, refilled and water levels recorded until a stabilized rate was determined. The percolation test results are attached (Plate C)
6. Depth to Ground Water:
Depth to groundwater according to "D.W.R. Hydrologic Map Series Report No. 27 Sheet 1 of 3 Depth to Water and Altitude of the Water Level" (1992-1992) is approximately 460 feet. Refer to attached map (Plate D)
7. Description of Topography:
See Item 1
8. Present and Future Uses Around Site:
The immediate area surrounding this site is presently farm land and will probably remain the same or be developed residential.

Plate B: Boring Log

For: Circle G Pegasus
 Project: Circle G Pegasus Airpark, Unit 2
 Location of Project: Empire Boulevard and Ellsworth Road
 Boring No. Lot 115
 Location: See Site Plan

Date: 4/19/02 Project No. 02-20777-1
 Type of Boring: 7" Auger
 Field Party: Heber Mining /D. Johnson

-	Silty Sand, tan, 65% sand, 35% fines, non plastic, no cementation
2-	
-	
4-	
-	
6-	
-	
8-	light brown, 55% sand, 45% fines
-	
10-	
-	
12-	
-	
14-	
-	
16-	
-	
18-	
-	
20-	Silty Clayey Sand, low Pf, 10% gravel, 55% sand, 35% fines, dense
-	
22-	
-	
24-	
-	
26-	
-	
28-	brown, 65% sand, 35% fines, moist, medium PI, no cementation
-	
30-	

-	Silty Sandy Clay, 45% sand, 55% fines, high PI
32-	
-	increased clays
34-	
-	
36-	
-	
38-	15% sand, 85% fines, high PI
-	
40-	
-	
42-	
-	
44-	10% sand, 90% fines
-	
46-	51% sand, 95% fines
-	
48-	
-	
50-	Bottom of Test Hole at 50'
-	
52-	
-	
54-	
-	
56-	
-	
58-	
-	
60-	

Plate B: Boring Log

For: Circle G Pegasus
 Project: Circle G Pegasus Airpark, Unit 2
 Location of Project: Empire Boulevard and Ellsworth Road
 Boring No. Lot 118
 Location: See Site Plan

Date: 4/19/02 Project No. 02-20777-1
 Type of Boring: 7" Auger
 Field Party: Heber Mining /D. Johnson

-	Silty Sand, tan, damp, 55% sand 45% fines low - non plastic, no cementation
2-	
-	
4-	
-	
6-	light brown,
-	
8-	
-	
10-	tan, low PI
-	
12-	
-	
14-	
-	
16-	
-	
18-	
-	
20-	
-	
22-	light brown, increased sand, 65% sand, 35% fines, low - non plastic
-	
24-	
-	
26-	
-	
28-	increase in gravel, 15% gravel, 45% sand, 20% fines
-	
30-	

-	
32-	20% gravel 65% sand, 15% fines
-	
34-	
-	
36-	light brown, 10% gravel 65% sand, 25% fines
-	
38-	
-	
40-	brown, low PI,
-	
42-	
-	
44-	
-	
46-	Clayey Silty sand 10% gravel, 65% sand, 25% fines, pinkish brown, low-medium PI
-	
48-	
-	
50-	Bottom of Test Hole at 50'
-	
52-	
-	
54-	
-	
56-	
-	
58-	
-	
60-	

Plate B: Boring Log

For: Circle G Pegasus
 Project: Circle G Pegasus Airpark, Unit 2
 Location of Project: Empire Boulevard and Ellsworth Road
 Boring No. Lot 121
 Location: See Site Plan

Date: 4/19/02 Project No. 02-20777-1
 Type of Boring: 7" Auger
 Field Party: Heber Mining /D. Johnson

-	Silty Sand, tan, 55% sand, 45% fines, non plastic, no cementation
2-	
-	
4-	
-	
6-	light brown
-	
8-	
-	
10-	
-	
12-	
-	tan, trace of gravel, 60% sand, 40% fines, weak cementation
14-	
-	light brown
16-	5% increased of gravel, 60% sand, 35% fines
-	
18-	
-	
20-	
-	20% gravel, 50% sand, 30% fines
22-	
-	
24-	
-	
26-	
-	Silty Clayey sand, brown, 5% gravel, 55% sand, 45% fines low PI
28-	
-	
30-	

-	
32-	increase sand, pinkish, low -medium PI,
-	
34-	
-	
36-	Increase in gravel, 10% gravel, 70% sand, 20% fines
-	
38-	
-	
40-	Sandy Silty Clay, pinkish brown, trace of gravel, 60% sand, 40% fines, medium-high PI
-	
42-	
-	
44-	
-	
46-	
-	
48-	
-	
50-	Bottom of Test Hole at 50'
-	
52-	
-	
54-	
-	
56-	
-	
58-	
-	
60-	

Plate B: Boring Log

For: Circle G Pegasus
 Project: Circle G Pegasus Airpark, Unit 2
 Location of Project: Empire Boulevard and Ellsworth Road
 Boring No. Lot 123
 Location: See Site Plan

Date: 4/19/02 Project No. 02-20777-1
 Type of Boring: 7" Auger
 Field Party: Heber Mining /D. Johnson

-	Silty Sand, tan, damp, 55% sand, 45% fines, non plastic, no cementation
2-	
-	
4-	
-	
6-	
-	
8-	
-	
10-	
-	
12-	
-	
14-	
-	
16-	
-	
18-	trace of gravel
-	
20-	
-	light gray to brown
22-	
-	65% sand, 35% fines
24-	
-	
26-	
-	
28-	
-	
30-	

-	
32-	
-	
34-	
-	
36-	
-	
38-	
-	
40-	
-	
42-	
-	
44-	Silty, Clayey Sand, light brown, pinkish brown, 10% gravel, 55% sand, 35% fines
-	
46-	
-	
48-	
-	
50-	Bottom of Test Hole at 50'
-	
52-	
-	
54-	
-	
56-	
-	
58-	
-	
60-	

Plate B: Boring Log

For: Circle G Pegasus
Project: Circle G Pegasus Airpark, Unit 2
Location of Project: Empire Boulevard and Ellsworth Road
Boring No.: Lot 127
Location: See Site Plan

Date: 4/19/02 **Project No.:** 02-20777-1
Type of Boring: 7" Auger
Field Party: Heber Mining /D. Johnson

-	Silty Sand, tan, damp, 55% sand, 45% fines, low PI, no cementation
2-	
-	
4-	
-	
6-	light brown
-	
8-	
-	
10-	
-	
12-	
-	
14-	
-	
16-	
-	
18-	
-	
20-	increased sand, grayish brown, 70% sand 30% fines, non plastic
-	
22-	
-	
24-	gray, 80% gravel, 20% fines
-	
26-	
-	
28-	grayish brown,
-	
30-	

-	increased gravel,
32-	brown
-	
34-	
-	
36-	Sandy Silty Gravel, brown, 60% gravel, 20% sand, 20% fines
-	
38-	
-	
40-	Silty Sand, grayish brown, trace of gravel, 60% sand, 40% fines
-	
42-	
-	
44-	
-	
46-	
-	
48-	
-	
50-	Bottom of Test Hole at 50'
-	
52-	
-	
54-	
-	
56-	
-	
58-	
-	
60-	

Plate B: Boring Log

For: Circle G Pegasus
 Project: Circle G Pegasus Airpark, Unit 2
 Location of Project: Empire Boulevard and Ellsworth Road
 Boring No. Lot 130
 Location: See Site Plan

Date: 4/19/02 Project No. 02-20777-1
 Type of Boring: 7" Auger
 Field Party: Heber Mining /D. Johnson

-	Silty Sand, tan, damp, 55% sand 45% fines, non plastic, no cementation
2-	
-	
4-	
-	
6-	
-	
8-	
-	light brown, 65% sand, 35% fines, low PI
10-	
-	
12-	
-	
14-	pinkish brown,
-	
16-	
-	
18-	
-	
20-	
-	increase sand, light pinkish brown, 75% sand, 25% fines, low PI
22-	
-	
24-	
-	
26-	brown, 10% gravel 65% sand
-	
28-	
-	
30-	

-	
32-	light pinkish brown
-	
34-	
-	
36-	Increased in gravel, 20% gravel, 60% sand, 20% fines
-	
38-	
-	
40-	
-	
42-	
-	
44-	
-	
46-	Clayey Silty Sand, pinkish brown, 20% gravel, 60% sand, 20% fines, medium PI
-	
48-	
-	
50-	Bottom of Test Hole at 50'
-	
52-	
-	
54-	
-	
56-	
-	
58-	
-	
60-	

Plate B: Boring Log

For: Circle G Pegasus
 Project: Circle G Pegasus Airpark, Unit 2
 Location of Project: Empire Boulevard and Ellsworth Road
 Boring No. Lot 135
 Location: See Site Plan

Date: 4/19/02 Project No. 02-20777-1
 Type of Boring: 7" Auger
 Field Party: Heber Mining /D. Johnson

-	Silty Sand, tan, damp, 60% sand, 40% fines, low - non plastic, no cementation
2-	
-	
4-	
-	
6-	light brown, 55% gravel, 45% fines
-	
8-	
-	
10-	
-	
12-	Silty Clayey Sand, low PI, 60% sand, 40% fines, Damp, no cementation
-	
14-	
-	
16-	
-	
18-	
-	
20-	
-	
22-	
-	
24-	increase in gravel, pinkish brown, 20% gravel, 60% sand, 20% fines, medium PI
-	
26-	
-	
28-	Clayey Silty Sand, trace of gravel, 60% sand, 40% Fines, medium PI, damp, no cementation
-	
30-	

-	
32-	
-	
34-	
-	
36-	increase in gravel, 30% gravel, 50% sand, 20% fines
-	
38-	10% gravel, 60% sand, 30% fines
-	
40-	Silty Sand Clay, 40% sand, 60% fines, high PI, damp, no cementation
-	
42-	
-	
44-	
-	
46-	
-	
48-	20% gravel, 80% fines
-	
50-	Bottom of Test Hole at 50'
-	
52-	
-	
54-	
-	
56-	
-	
58-	
-	
60-	

Plate B: Boring Log

For: Circle G Pegasus
 Project: Circle G Pegasus Airpark, Unit 2
 Location of Project: Empire Boulevard and Ellsworth Road
 Boring No.: Lot 138
 Location: See Site Plan

Date: 4/19/02 Project No. 02-20777-1
 Type of Boring: 7" Auger
 Field Party: Heber Mining /D. Johnson

-	Silty Sand, light brown damp, 55% sand, 45% fines, non plastic, no cementation
2-	
-	
4-	
-	
6-	tan
-	
8-	10% increase in gravel, 50% sand, 40% fines
-	
10-	
-	
12-	
-	
14-	
-	
16-	light brown, trace of gravel, 55% sand, 45% fines
-	
18-	
-	
20-	
-	
22-	
-	
24-	
-	
26-	Clayey Silty Sand, 70% sand, 30% fines, low PI damp, no cementation
-	
28-	
-	
30-	

-	
32-	
-	
34-	
-	
36-	
-	
38-	
-	
40-	
-	decrease in sand, 55% sand, 45% fines
42-	
-	
44-	
-	
46-	Silty Sandy Clay, brown, trace of gravel, 30% sand, 70% fines, damp
-	
48-	
-	
50-	Bottom of Test Hole at 50'
-	
52-	
-	
54-	
-	
56-	
-	
58-	
-	
60-	

Plate B: Boring Log

For: Circle G Pegasus
 Project: Circle G Pegasus Airpark, Unit 2
 Location of Project: Empire Boulevard and Ellsworth Road
 Boring No. Lot 141
 Location: See Site Plan

Date: 4/19/02 Project No. 02-20777-1
 Type of Boring: 7" Auger
 Field Party: Heber Mining /D. Johnson

-	Silty Sand, tan, damp, 55% sand, 45% fines, low-non plastic, no cementation
2-	
-	
4-	
-	
6-	
-	
8-	light brown, trace of gravel
-	
10-	brown
-	
12-	increase in sand and gravel, 50% gravel, 50% sand
-	
14-	
-	
16-	increase sand, 70% sand, 30% fines
-	
18-	
-	
20-	
-	
22-	
-	
24-	increase in gravel, 10% gravel, 70% sand, 20% fines
-	
26-	
-	
28-	pinkish brown
-	
30-	

-	
32-	
-	
34-	
-	
36-	
-	
38-	Clayey Sand, Gravelly, pinkish brown, 70% gravel, 20% sand, 10% fines, damp, low PI
-	
40-	
-	
42-	
-	
44-	55% gravel, 25% sand, 20% fines, low-medium PI
-	
46-	Clayey Silty Sand with Gravel, 30% gravel, 40% Sand, 30% fines, high PI, damp
-	
48-	
-	
50-	Bottom of Test Hole at 50'
-	
52-	
-	
54-	
-	
56-	
-	
58-	
-	
60-	

Plate B: Boring Log

For: Circle G Pegasus
Project: Circle G Pegasus Airpark, Unit 2
Location of Project: Empire Boulevard and Ellsworth Road
Boring No.: Lot 144
Location: See Site Plan
Date: 4/19/02
Type of Boring: 7" Auger
Project No.: 02-20777-1
Field Party: Heber Mining /D. Johnson

-	Silty sand, light brown, damp, 55% sand, 45% fines non plastic, no cementation
2-	
-	
4-	
-	
6-	
-	
8-	
-	
10-	
-	
12-	
-	
14-	tan
-	
16-	grayish tan
-	
18-	gray
-	
20-	
-	
22-	
-	
24-	
-	
26-	grayish brown, trace of gravel
-	
28-	
-	
30-	

-	
32-	light brown
-	
34-	
-	
36-	grayish brown, trace of gravel, 80% sand, 20% fines
-	
38-	
-	
40-	
-	
42-	
-	
44-	
-	
46-	Sandy Silty Gravel, light brown, 60% gravel, 30% sand, 10% fines, low PI, damp
-	
48-	
-	
50-	Bottom of Test Hole at 50'
-	
52-	
-	
54-	
-	
56-	
-	
58-	
-	
60-	

Plate B: Boring Log

For: Circle G Pegasus
 Project: Circle G Pegasus Airpark, Unit 2
 Location of Project: Empire Boulevard and Ellsworth Road
 Boring No.: Lot 147
 Location: See Site Plan

Date: 4/19/02 Project No. 02-20777-1
 Type of Boring: 7" Auger
 Field Party: Heber Mining /D. Johnson

-	Silty Sand, tan, damp, 70% sand, 30% fines, non plastic, no cementation
2-	
-	
4-	
-	
6-	
-	
8-	light brown, 60% sand, 40% fines
-	
10-	
-	
12-	55% sand, 45% fines, low PI
-	
14-	
-	
16-	brown
-	
18-	increase in sand, 70% sand, 30% fines, non plastic
-	
20-	
-	
22-	increase in gravel
-	
24-	Silty Sand with Trace of Gravel, grayish brown
-	10% gravel, 70% sand, 20% fines, low PI, damp
26-	
-	
28-	
-	
30-	

-	
32-	
-	
34-	20% gravel, 50% sand, 30% fines
-	
36-	10% gravel, 60% sand, 30% fines
-	
38-	
-	
40-	Sandy Silty Gravel, trace of cobbles, 60% gravel, 30% sand, 10% fines, low PI, damp
-	
42-	
-	
44-	
-	
46-	
-	
48-	70% gravel, 20% sand, 10% fines
-	
50-	Bottom of Test Hole at 50'
-	
52-	
-	
54-	
-	
56-	
-	
58-	
-	
60-	

Plate B: Boring Log

For: Circle G Pegasus
 Project: Circle G Pegasus Airpark, Unit 2
 Location of Project: Empire Boulevard and Ellsworth Road
 Boring No. Lot 151
 Location: See Site Plan

Date: 4/19/02 Project No. 02-20777-1
 Type of Boring: 7" Auger
 Field Party: Heber Mining /D. Johnson

-	Silty Sand, tan, damp, 65% sand, 35% fines, non-plastic, no cementation
2-	
-	
4-	
-	
6-	light brown, 60% sand, 40% fines
-	
8-	
-	
10-	
-	
12-	
-	
14-	
-	
16-	light pinkish brown, 55% sand, 45% fines
-	
18-	
-	
20-	
-	
22-	
-	
24-	Pinkish brown, increase in gravel 10% gravel, 50% sand, 40% fines
-	
26-	sand lenses
-	
28-	trace of cobbles, 20% gravel, 50% sand, 30% fines
-	
30-	

-	
32-	
-	
34-	
-	
36-	
-	
38-	
-	
40-	
-	
42-	
-	
44-	
-	
46-	Sandy Gravel with trace of Cobbles, grayish light brown, 10% cobbles, 60% gravel, 20% sand, 10% fines, non plastic, damp
-	
48-	
-	
50-	Bottom of Test Hole at 50'
-	
52-	
-	
54-	
-	
56-	
-	
58-	
-	
60-	

Plate B: Boring Log

For: Circle G Pegasus
Project: Circle G Pegasus Airpark, Unit 2
Location of Project: Empire Boulevard and Ellsworth Road
Boring No.: Lot 155
Location: See Site Plan

Date: 4/19/02 **Project No.:** 02-20777-1
Type of Boring: 7" Auger
Field Party: Heber Mining /D. Johnson

-	Silty Sand, light brown, damp, 60% sand, 40% fines, no cementation
2-	
-	
4-	
-	
6-	
-	
8-	
-	
10-	
-	
12-	
-	Silty Clayey Sand, Brown, low PI, 60% sand, 40% fines, damp
14-	
-	
16-	
-	Silty Sand, light brown, 70% sand, 30% fines, non plastic, damp
18-	
-	
20-	
-	Silty Clayey Sand, pinkish brown, with trace of gravel, 10% gravel, 50% sand, 40% fines, low-medium PI, damp
22-	
-	
24-	
-	sand lenses
26-	
-	increase in gravel, 20% gravel, 40% sand, 40% fines
28-	
-	
30-	

-	
32-	
-	
34-	
-	Silty Sand with Trace of Gravel, 10% gravel, 60% sand, 10% fines, non plastic, damp
36-	
-	
38-	
-	
40-	
-	
42-	
-	
44-	
-	
46-	
-	
48-	
-	
50-	Bottom of Test Hole at 50'
-	
52-	
-	
54-	
-	
56-	
-	
58-	
-	
60-	

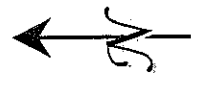
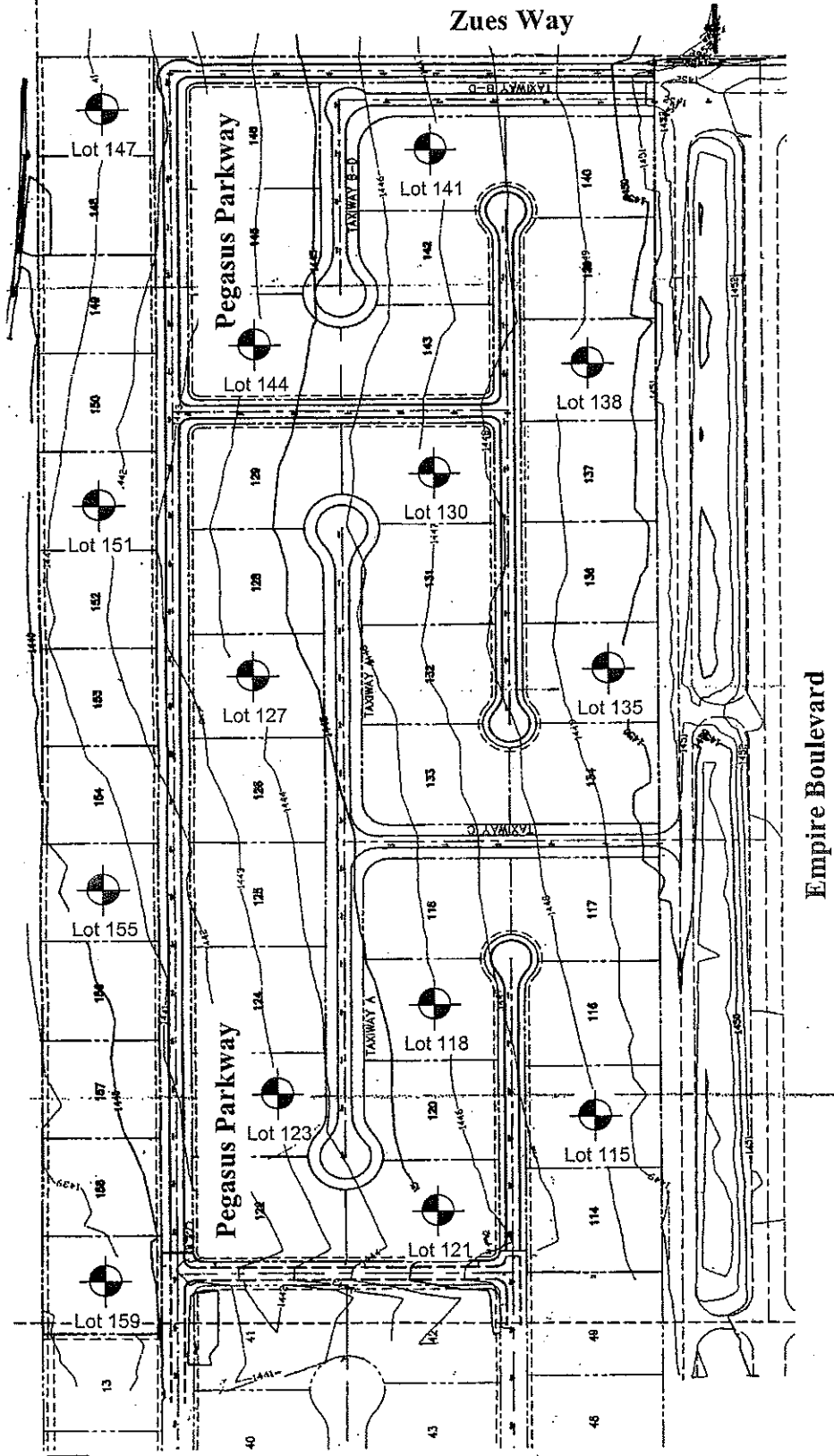
Plate B: Boring Log

For: Circle G Pegasus
 Project: Circle G Pegasus Airpark, Unit 2
 Location of Project: Empire Boulevard and Ellsworth Road
 Boring No. Lot 159
 Location: See Site Plan

Date: 4/19/02 Project No. 02-20777-1
 Type of Boring: 7" Auger
 Field Party: Heber Mining /D. Johnson

-	Silty Sand, light brown, 5% gravel, 65% sand, 30% fines, non plastic, no cementation
2-	
-	
4-	
-	
6-	
-	
8-	tan, 5% gravel 75% sand, 20% fines
-	
10-	
-	
12-	
-	
14-	
-	light tan
16-	
-	
18-	15% gravel, 75% sand, 10% fines
-	
20-	
-	
22-	
-	
24-	
-	sand lenses
26-	
-	
28-	
-	
30-	

-	
32-	
-	
34-	
-	increase silty, no gravel, 70% sand, 30% fines
36-	
-	
38-	
-	
40-	
-	
42-	
-	
44-	
-	
46-	
-	
48-	60% sand, 40% fines
-	
50-	Bottom of Test Hole at 50'
-	
52-	
-	
54-	
-	
56-	
-	
58-	
-	
60-	



Legend:



 Approximate Test Hole Location

Plate A: Site Plan		
Scale: N.T.S.	Drawn By: ck	Date: 04/29/2002
Circle G Pegasus Airpark, Unit 2 Empire Boulevard and Ellsworth Road Queen Creek, Arizona		
CIT Project No. 02-20777-1		

CONSTRUCTION INSPECTION
MATERIALS TESTING

ENGINEERING INVESTIGATIONS
SANITATION INSPECTION

CONSTRUCTION INSPECTION & TESTING Co.

2137 WEST 7TH STREET
TEMPE, ARIZONA 85282-7227
PHONE 480-446-9876 FAX 480-446-7580

Percolation Test Report

CLIENT: Circle G Pegasus ADDRESS: 2220 S. Country Club, Suite 107
PROJECT: Circle G Pegasus Airpark, Unit 2 ADDRESS: Empire Blvd. and Ellsworth Rd.
No. Acres: Lot Size: Sq. Ft. Bdrm/Lot:
Water Supply From: Public (X) Private Well ()
Date: 04/19/2002 Driller:

The stabilized rate of percolation is the average time in minutes required for water to fall one inch.

<u>TEST HOLE</u>	<u>DEPTH</u>	<u>STABILIZED RATE</u>
Lot 115	5.0 Feet	10 Minutes Per Inch
Lot 118	5.0 Feet	4 Minutes Per Inch
Lot 121	5.0 Feet	5 Minutes Per Inch
Lot 123	5.0 Feet	6 Minutes Per Inch
Lot 127	5.0 Feet	5 Minutes Per Inch
Lot 130	5.0 Feet	9 Minutes Per Inch
Lot 135	5.0 Feet	10 Minutes Per Inch
Lot 138	5.0 Feet	6 Minutes Per Inch
Lot 141	5.0 Feet	5 Minutes Per Inch
Lot 144	5.0 Feet	4 Minutes Per Inch
Lot 147	5.0 Feet	5 Minutes Per Inch
Lot 151	5.0 Feet	5 Minutes Per Inch
Lot 155	5.0 Feet	4 Minutes Per Inch
Lot 159	5.0 Feet	7 Minutes Per Inch

Water Table Elevations: NONE ENCOUNTERED
General Soil Information: SEE BORING LOGS

Tests By: **CONSTRUCTION INSPECTION & TESTING Co.**

DATE: 04/19/2002 SIGNATURE: TITLE: P. E.

We have examined the above results of these preliminary percolation tests and the accompanying soil identification logs. Based upon this information, it appears that septic tanks with seepage pits (), leaching lines (x), disposal bed () will be suitable for this tract.

It is understood that the conclusions rendered on this report do not cover the installation of the individual septic tank systems. The design, construction and installation of each system should be based upon specific conditions affecting each building plot.

Remarks:
PUBLIC HEALTH AUTHORITY _____ TITLE: _____ DATE _____

Plate 'C'

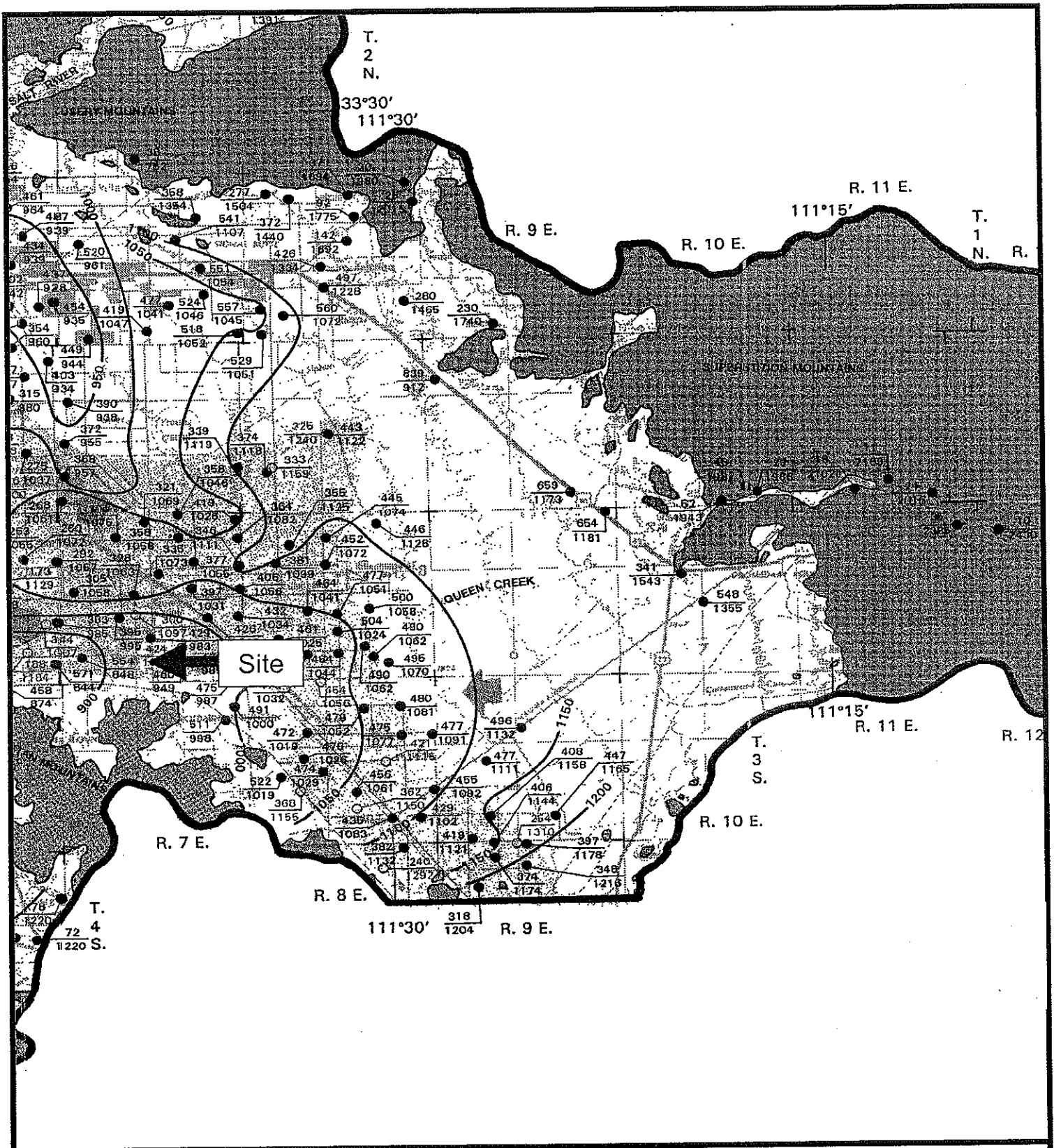


Plate D: D.W.R Hydrologic Map Series Report No. 27 Sheet 1 of 3 Depth to Water and Altitude of the Water Level (1991-1992)

Scale: N.T.S.	Drawn By: ek	Date: 04/29/2002
	<p>Circle G Pegasus Airpark, Unit 2 Empire Boulevard and Ellsworth Road Queen Creek, Arizona</p>	
CIT Project No.: 02-20777-1		